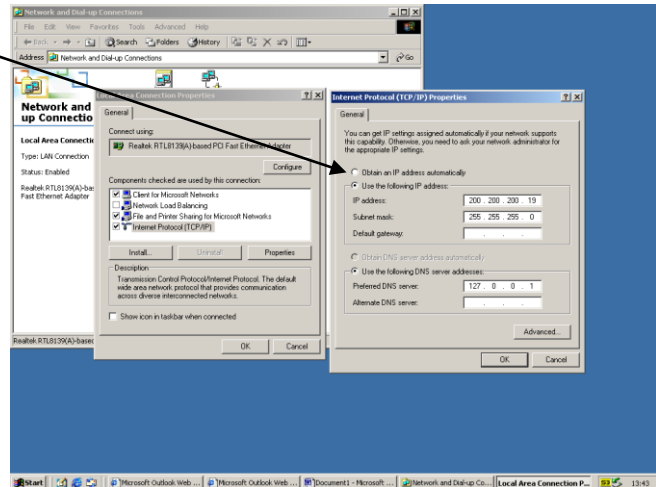


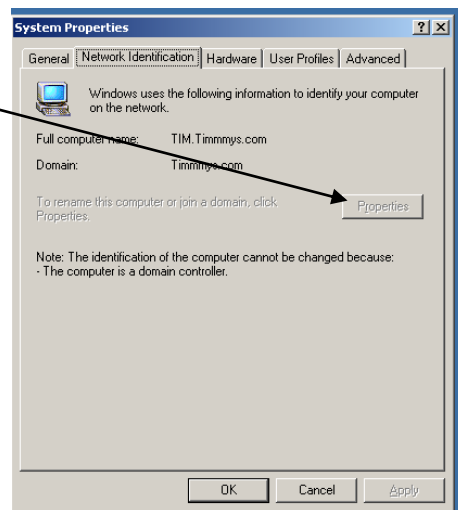
INSTALLING A DOMAIN SERVER.

Here are the steps to set up a domain:

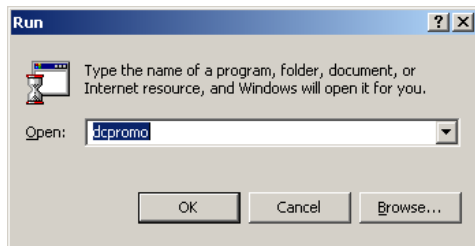
1. First install the windows server software.
2. Once this complete change the computer IP address to a static IP.



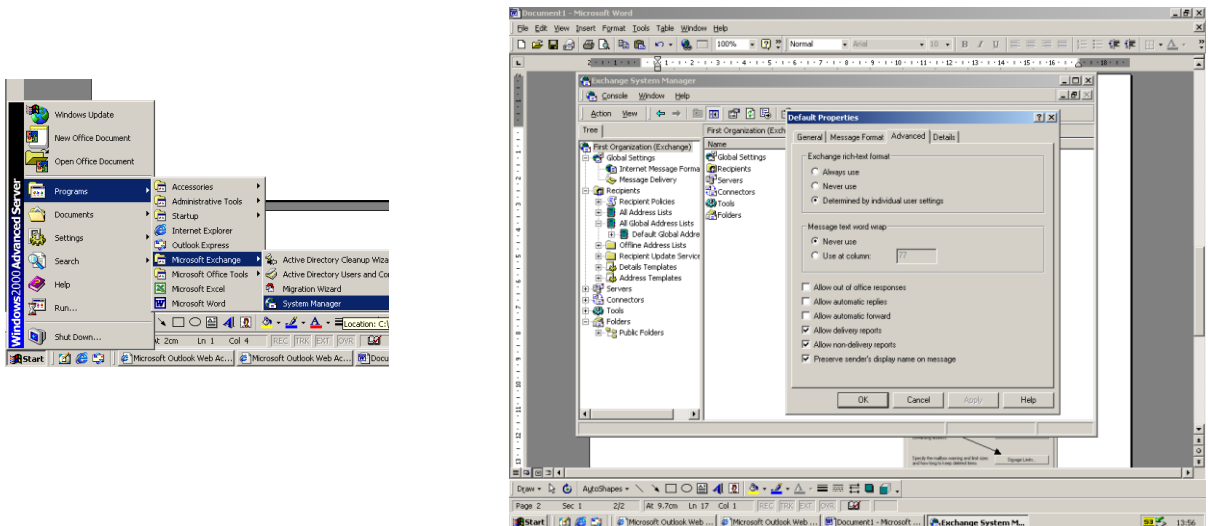
3. Change your computer name.
Followed by a restart.



4. Then set the active directory



5. Setting Limits to mailboxes Globally:



6. Setting Limits to mailboxes to one user:

You can set restrictions, Delivery options and storage Locations.

