

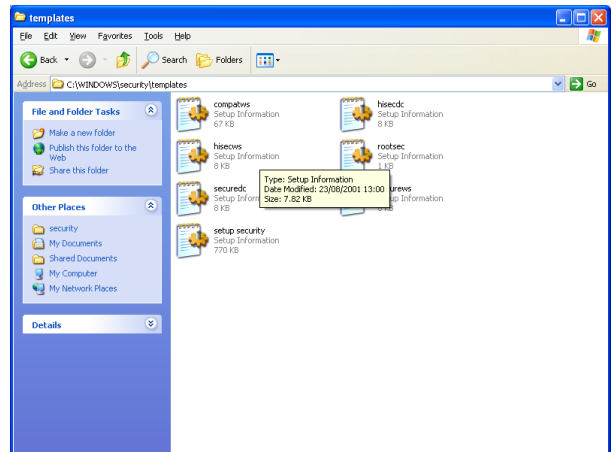
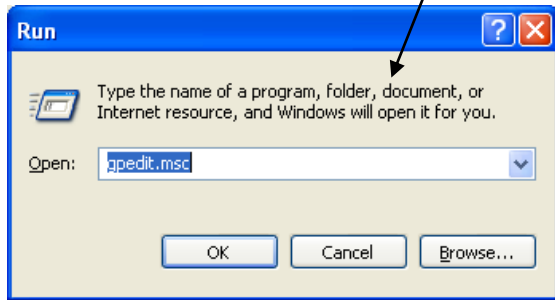
LOCAL SECURITY SETTINGS

Accessing the security templates

To access the templates you must go *My computer – C:\ - Windows – Security.*

Accessing Local Computer Policy

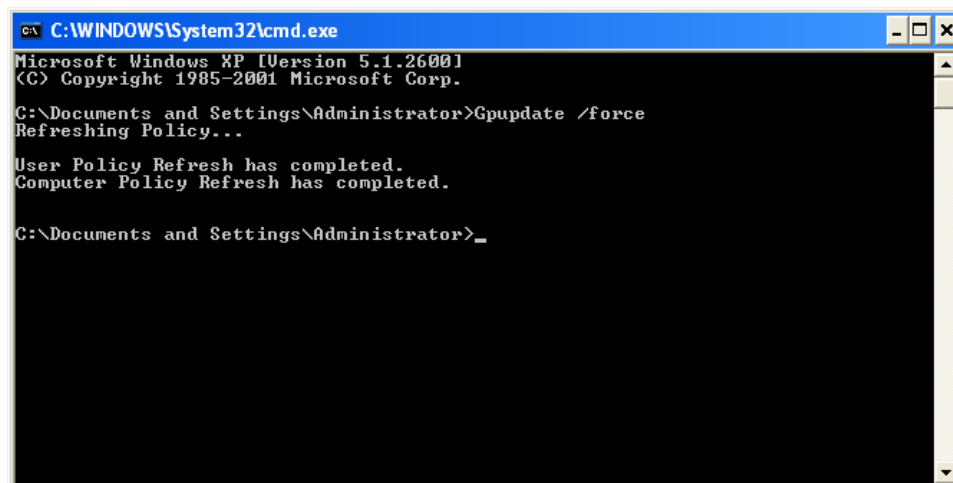
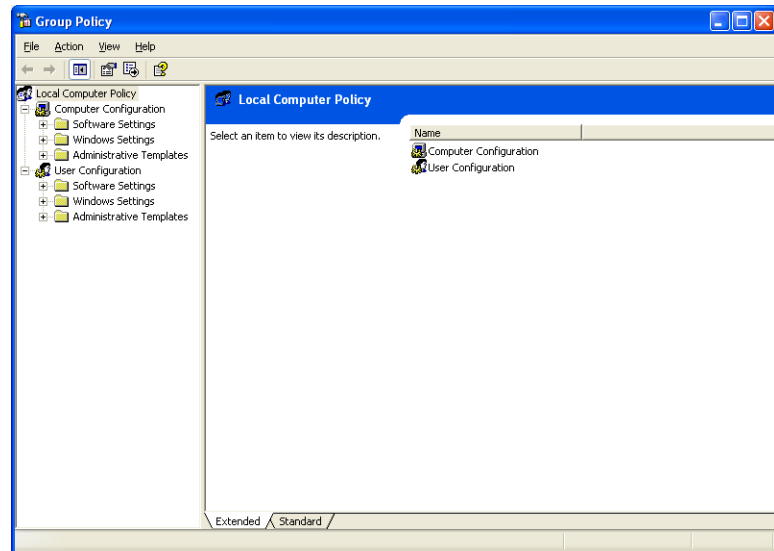
Access the run box and type:



This then brings up the local policy: →

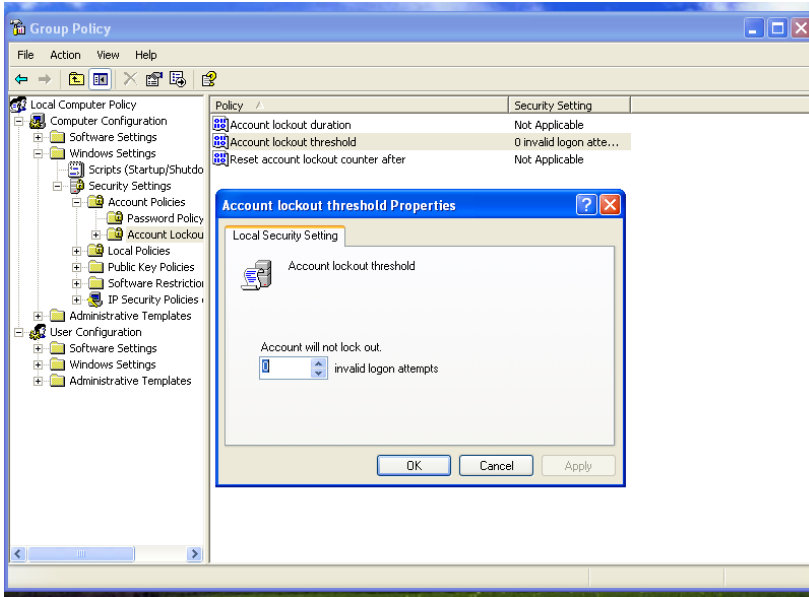
This policy enables you to set certain things:

- Settings for passwords (i.e. minimum and maximum characters.)
- Disable Items (Run box, Desktop Items, Control Panel App's, Certain Drives, Installing Programs)
- Disable CD Auto run
- Disable the running of .exe files
- Changes in the computer config require a restart, well as changes in user config require you to log off and back in again (**Warning!!!** If using windows vista or windows 7 any changes you make in user config are made instantly).
- Or you can type `Gpupdate /force` in the cmd box this will update the policy without the need to log off.

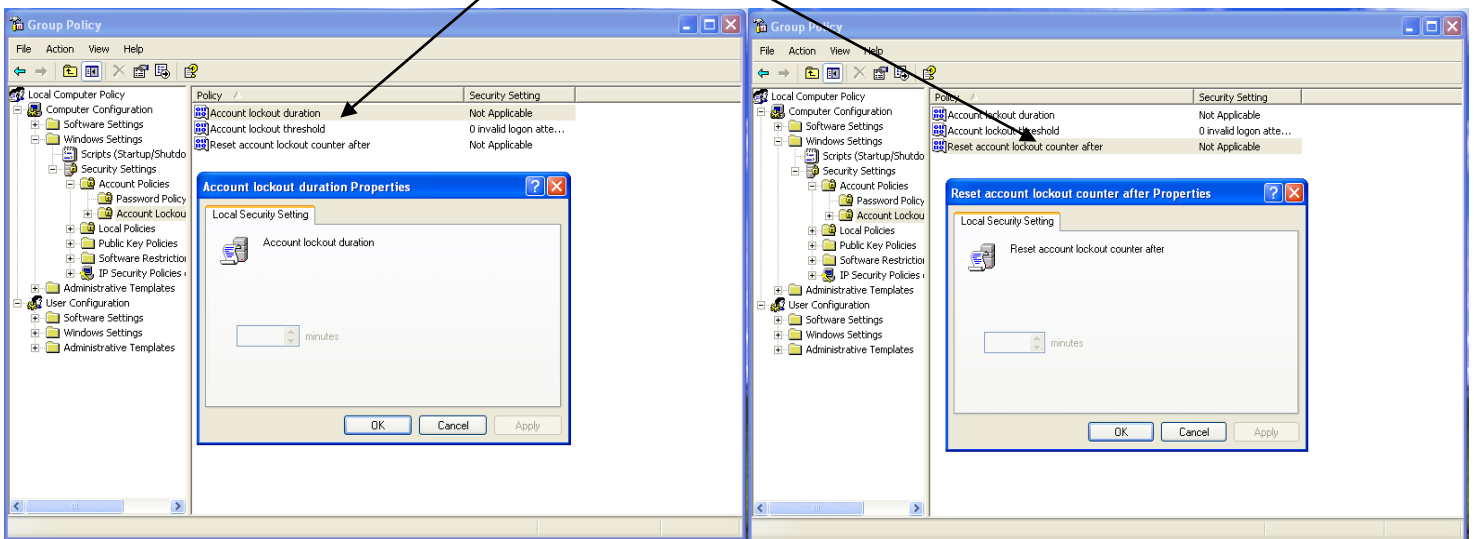


This policy does affect all users on the drive; if the administrator requires access to any of these he must modify the policy to give him access.

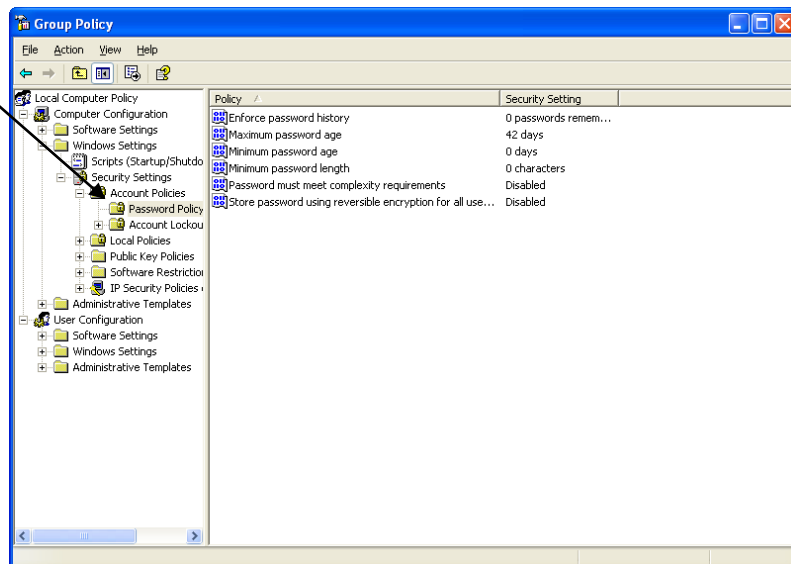
Setting Account lock out attempts:



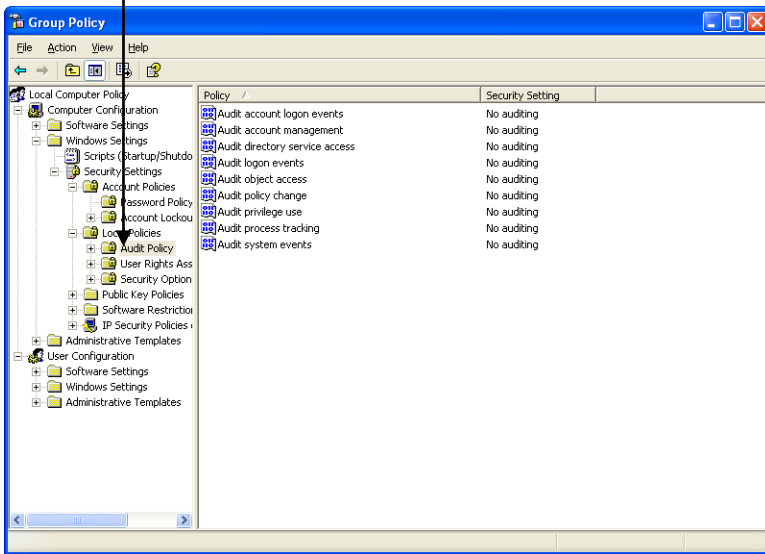
Setting Account Lock Out Duration / Resets



Password Policies

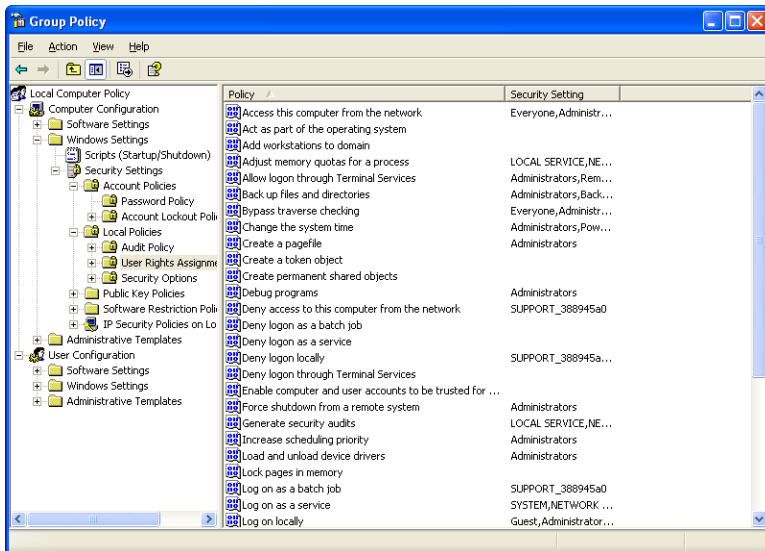


Setting Audits to view failed logins



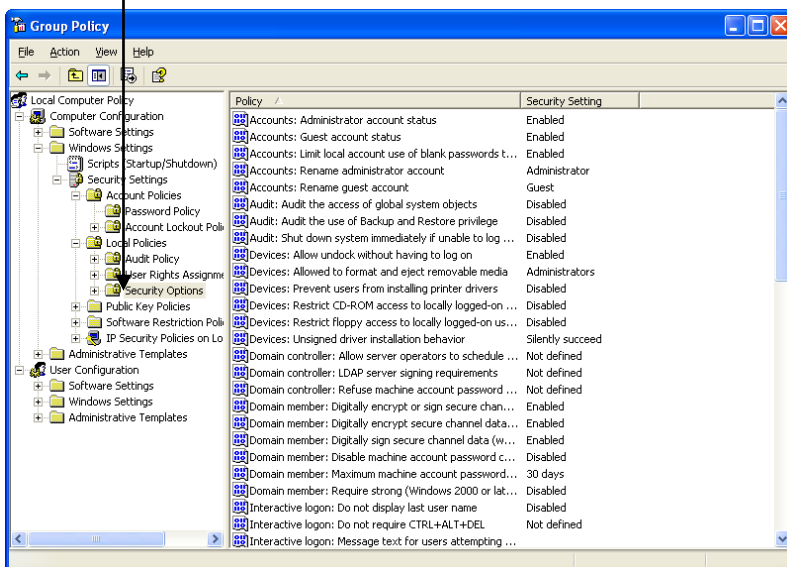
Allows you to set logon attempts, resets and view login failures. Also allows you to use to event view to see who has been accessing what files and folders.

User Rights of Access



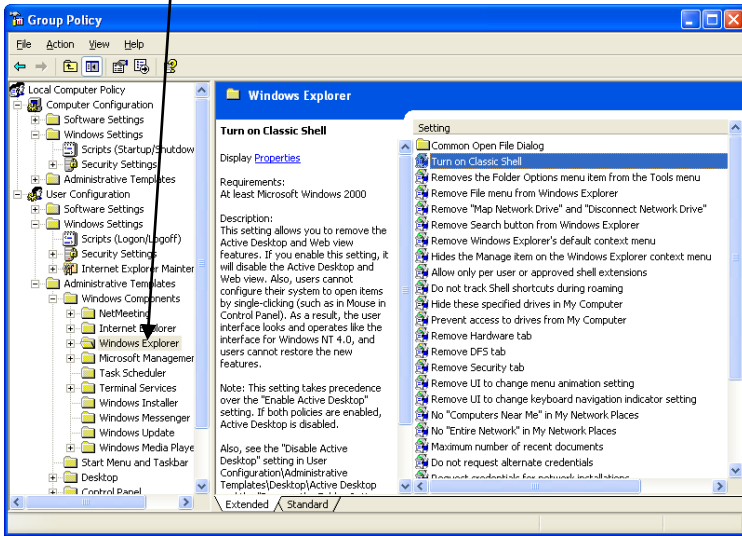
Set the rights of access to certain parts of the system.

Security Options



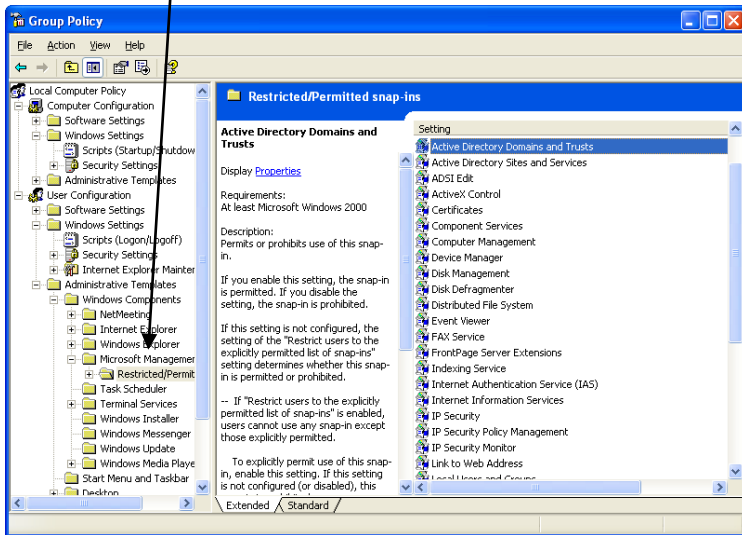
Sets certain security options such as: not showing the last user name, login message, failed login messages. Prompts for password changes, set forced login times (i.e. login in 8am and turn shut down at 5pm).

Configuring Windows to restrict access to certain areas:



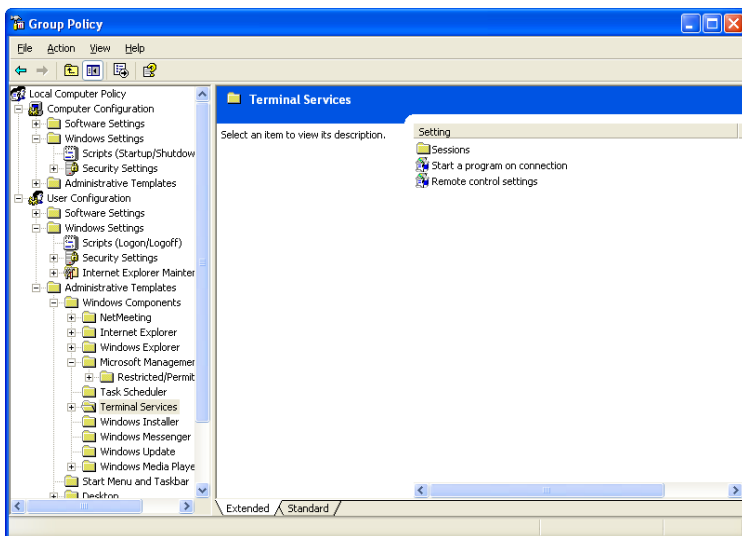
This can restrict access to item like viewing the C drive, removing the file menus, setting a limit to the recycle bin, prevent access to My Computer and removing the security tab.

Restricting Use of Snap-ins on the MMC



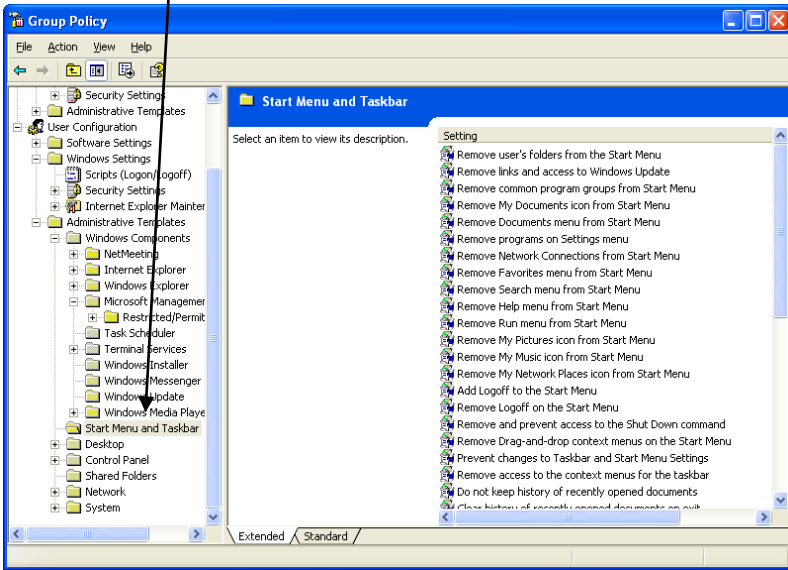
This allows the you to stop access to certain snap ins in the MMC. Stopping people from accessing local users and groups.

Setting programs to start on Log-in



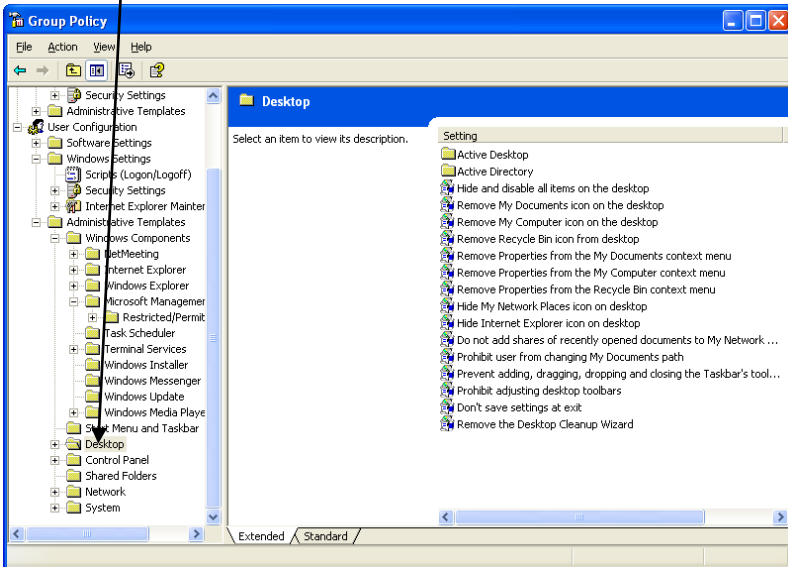
Allows you to set programs to start straight away when you log-in.

Restricting Access to certain start menu icons.



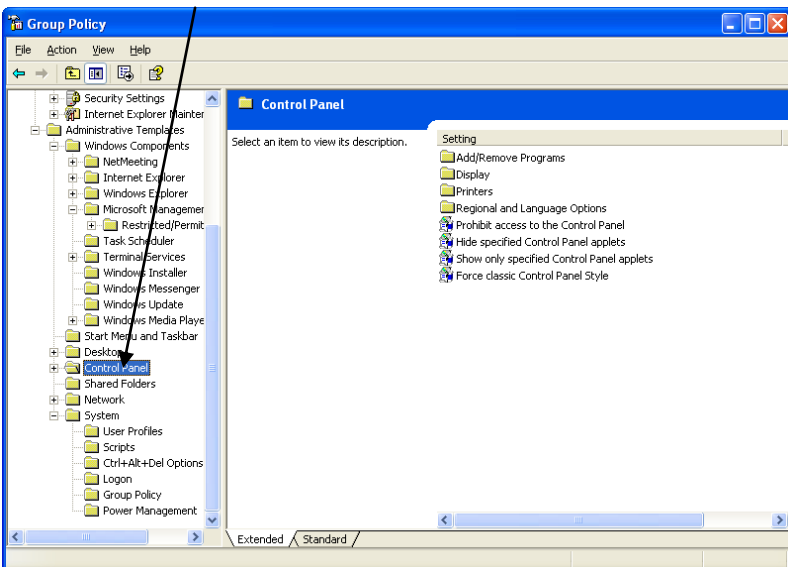
Allows you to remove certain icons from the start menu.

Desktop settings



Settings for desktop icons and features.

Control Panel Settings



Set restrictions to control panel settings.