

NTFS Security

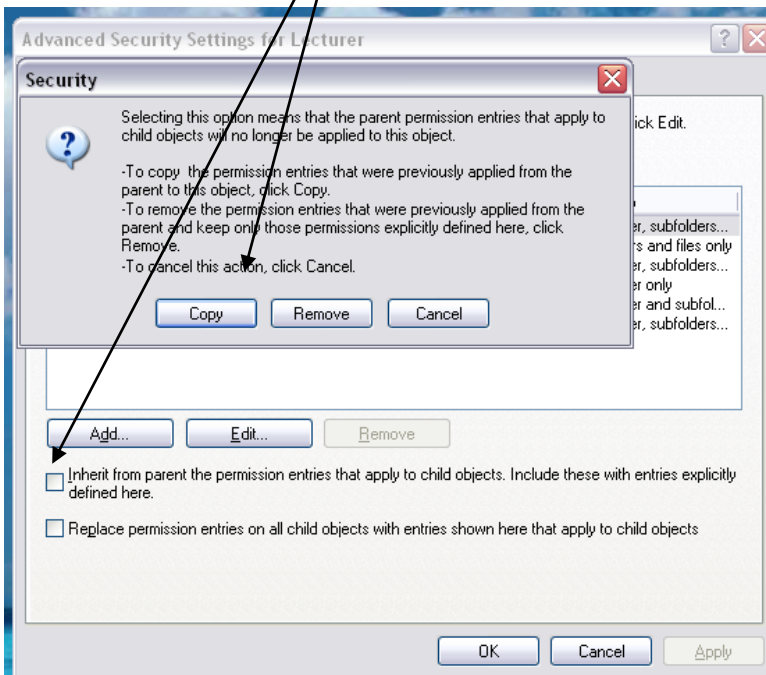
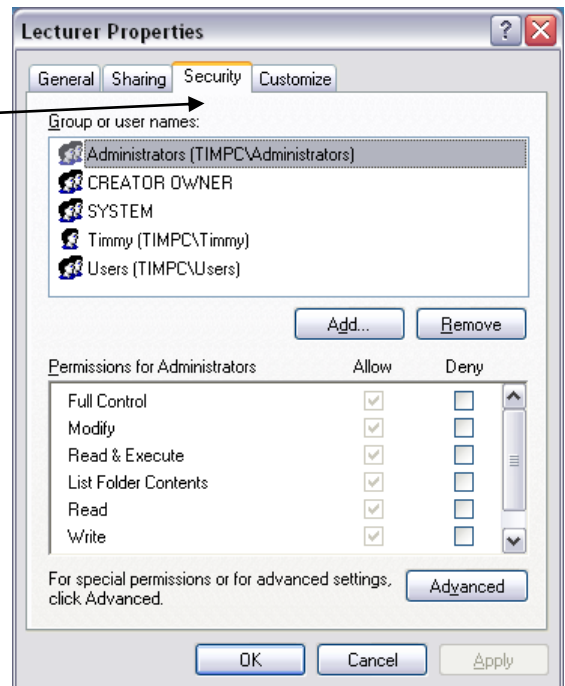
What Is NTFS used for?

- Controls user access to file/folders/resources.
- It is the security for the local computer.

Enter it via right clicking on your folder and clicking the security tabs.

If you examine your C:\ you will find administrators will have full control if you change anything in the C:\ security it is inherited down to the folders inside it.

To remove the inheritance from the users click on the advanced button and you will be sent to the next box. Ensure you un-tick the check box about inheritance and select copy!!!



Permissions

Read – Read Files

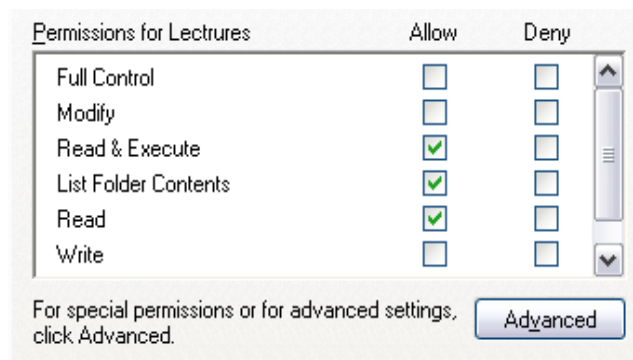
Write – Make changes to files

List Folder Contents – its Obvious

Modify – Control ACL

Read & Execute – Read, Change Files and run executable (.exe) files.

Full Control – Take ownership of all files and folders.



Effective Permissions

- File Permissions will always over rule folder permissions.
- Deny will over rule allow.
- Permissions are still inherited from the parent directory.
- UNC PATHNAME can be used to gain access (*C:\sales\salesfigures.xls*).

Accessing the special file permissions can be set via the right clicking on your folder (in this case we used the folder Training Data) and clicking the security tabs, than Advanced then add a user and you will be given a special permissions menu. →

Combing Sharing and NTFS

- Must have a shared permission and security permission to access data.
- The most restrictive permission will always take effect.

