

QUOTAS, COMPRESSION AND ENCRYPTION

QUOTA'S

- Size limits on data storage.
- Applies to all users.
- Supported By NTFS drives only.
- Configured by individual Volume.

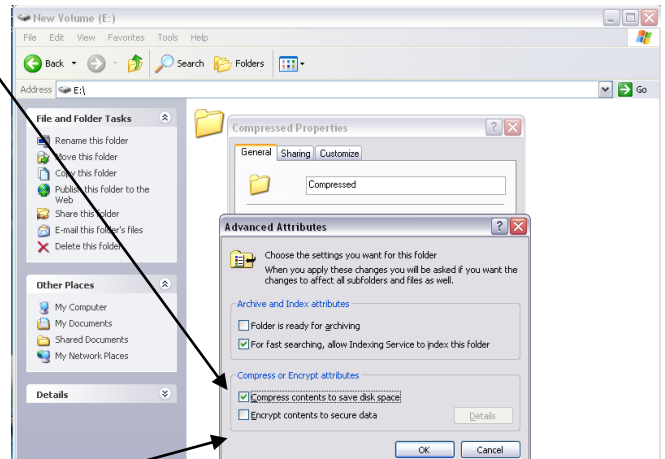
COMPRESSION (Displayed in Blue text)

By use of ZIP files

- Saves disk space with no decrease in performance
- Run .exe files and send .exe files

By use of NTFS compression

- Slows down disk performance
- Cannot be encrypted
- Different file types compress by different amounts
- Loss of quality in pictures

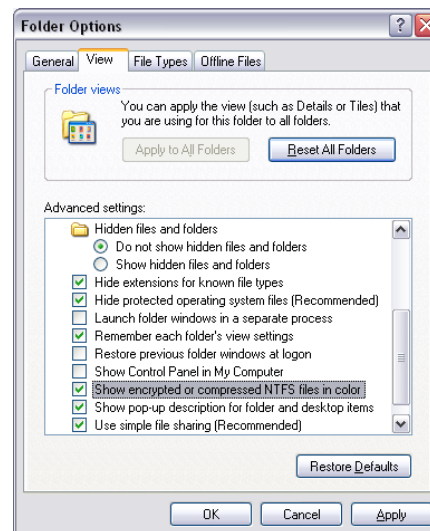


ENCRYPTION (Displayed in Green text)

- Use of EFS (Encrypted file system)
- Cannot be compressed if encrypted
- Encrypted files are connected to the user name (if you change your password or delete your account you lose access to your encrypted files)
- SID (Security Identifier)
- Backed up files also hold the encryption
- Transmission across a network will make file unencrypted

Using the command Prompt
Cipher /e /s:e:\filename

Text colours can be turned of in folder options



WINDOWS FILE ATTRIBUTES

- R Read only
- A Archived
- S System
- H Hidden

To add attributes to files use the command prompt
attrib + or - R e:\filename (this is for a read only command)

To compress in the Command Prompt use
Compact /c /s:e:\file name (if file name has a space i.e. The Folder, then it must have "marks. So it reads "e:\The Folder").

