

# Workgroups & Peer to Peer Networks

## Peer to peer (workgroups)

- All work together at the same level.
- They sometimes show as a workgroup.
- Workgroups are useful for SOHO (small office home office).
- It is simple and easier to setup.
- Configuration of the network is simple.
- Less security offered in workgroup.
- It is not recommended to have more than 20 computers.
- Only 10 computers can connect to one device at a time (i.e. printer).
- Users must have a local account on the computer they wish to use with password.
- Files sharing stored locally which requires backups on all machines.
- Requires a Network Operating system.

When networking use the **CAPS** (Client Adaptor Protocol Services) system

**C** – Client (user)

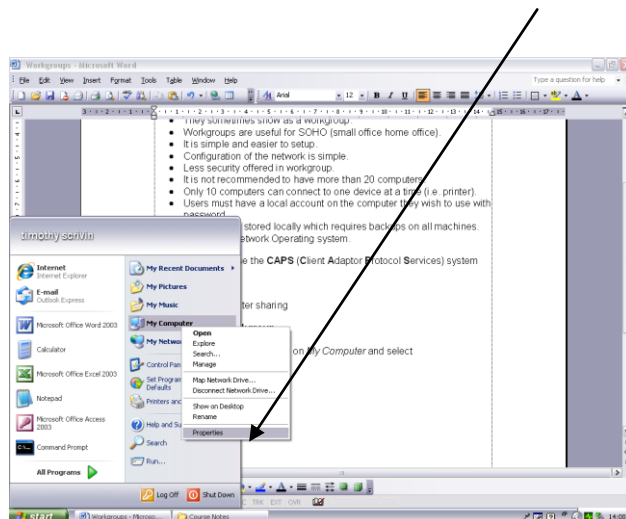
**A** – NIC drivers

**P** – TCP/IP

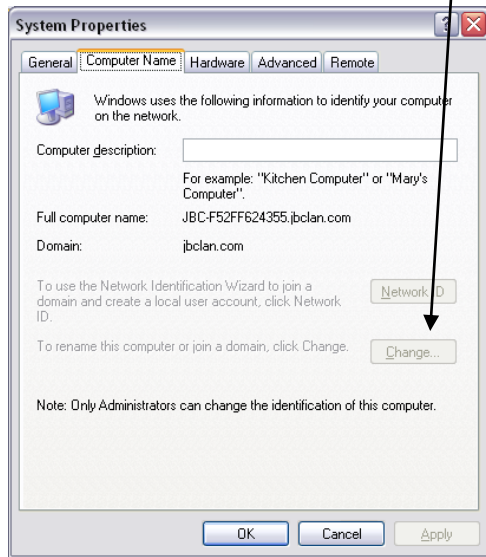
**S** – File sharing/Printer sharing

## How to enter a workgroup

To enter a workgroup right click on *My Computer* and select *properties*.



Select computer Name then select the *Change* button.



Then enter the name of the workgroup you wish to join

